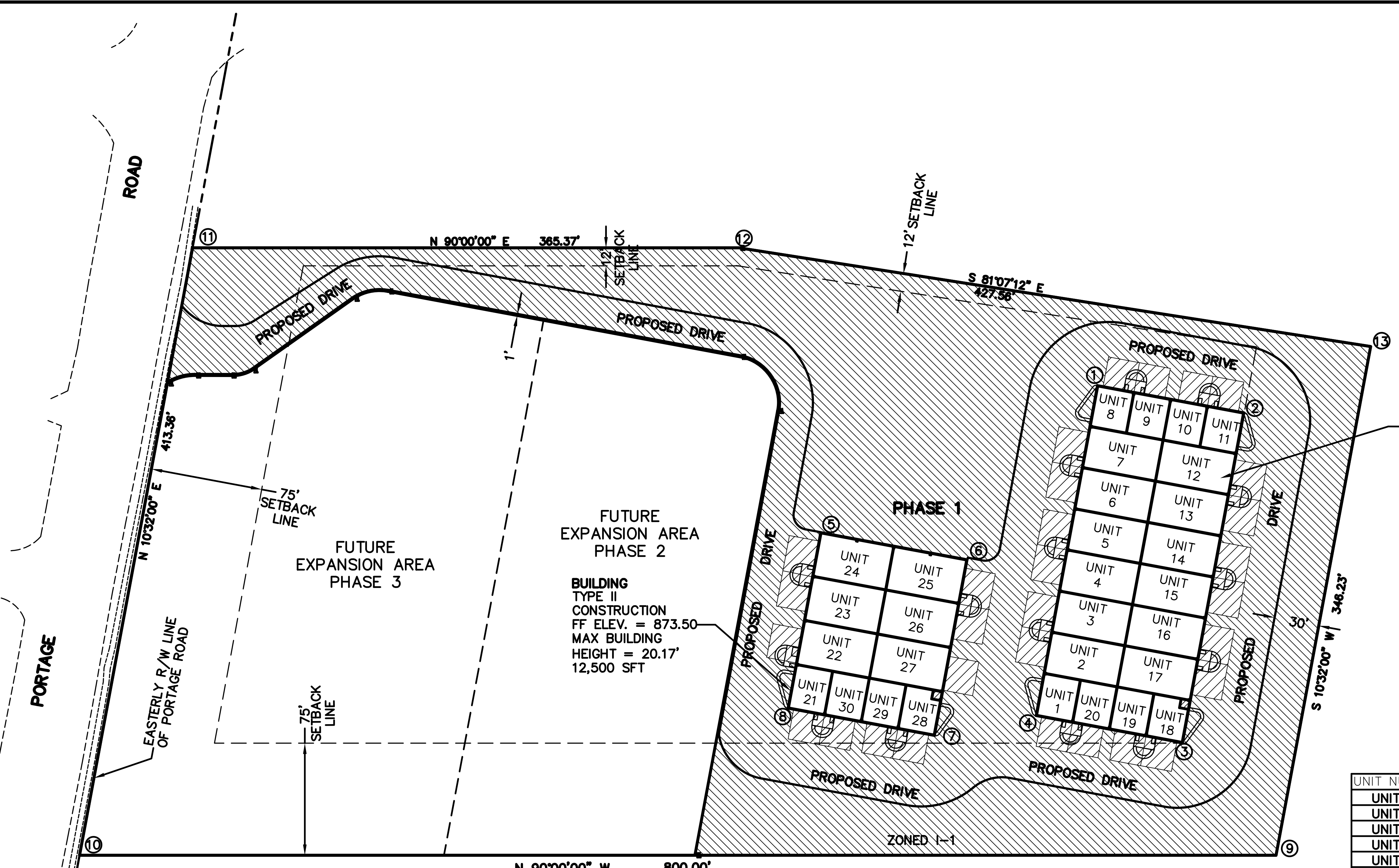


COORDINATE TABLE

POINT #	NORTHING	EASTING
1	5350.591	5685.066
2	5332.310	5783.381
3	5111.102	5742.249
4	5129.383	5643.934
5	5252.276	5499.974
6	5233.996	5598.289
7	5116.019	5576.315
8	5134.301	5478.021
9	5036.102	5804.589
10	5036.102	5004.511
11	5442.496	5080.077
12	5442.496	5445.447
13	5376.496	5867.882



**BUILDING TYPE II CONSTRUCTION**  
 FF ELEV. = 874.00  
 MAX BUILDING HEIGHT = 20.17'  
 22,500 SFT

**BUILDING TYPE II CONSTRUCTION**  
 FF ELEV. = 873.50  
 MAX BUILDING HEIGHT = 20.17'  
 12,500 SFT

UNIT TABLE

UNIT NUMBER	SQUARE FEET
UNIT 1	680'
UNIT 2	1345'
UNIT 3	1345'
UNIT 4	1345'
UNIT 5	1345'
UNIT 6	1345'
UNIT 7	1345'
UNIT 8	655'
UNIT 9	655'
UNIT 10	655'
UNIT 11	655'
UNIT 12	1345'
UNIT 13	1345'
UNIT 14	1345'
UNIT 15	1345'
UNIT 16	1345'
UNIT 17	1345'
UNIT 18	639'
UNIT 19	680'
UNIT 20	680'
UNIT 21	703'
UNIT 22	1440'
UNIT 23	1440'
UNIT 24	1425'
UNIT 25	1425'
UNIT 26	1440'
UNIT 27	1440'
UNIT 28	660'
UNIT 29	703'
UNIT 30	703'

**NOTE:** ALL INTERIOR BUILDING WALLS ARE GENERAL COMMON ELEMENT.  
 ALL LIMITED COMMON ELEMENT AREAS ADJACENT TO ENTRANCES TO INDIVIDUAL UNITS ARE TO BE USED FOR ASSIGNED PARKING FOR SPECIFIED UNIT.  
 ALL UNITS NEED NOT BE BUILT.

- LEGEND**
- EXISTING EDGE OF ASPHALT
  - - - EXISTING EDGE OF CONCRETE
  - PROPERTY LINE
  - ▨ LIMITED COMMON ELEMENT
  - ▩ GENERAL COMMON ELEMENT
  - ⊕ COORDINATE CORNER. COORDINATE ORIGIN IS ARBITRARY

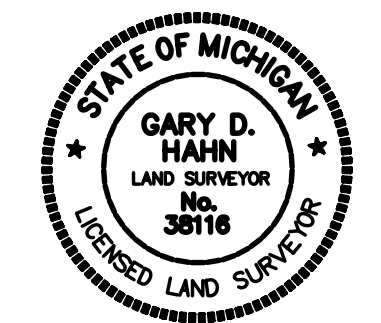
# CONDO BARN PORTAGE

## SITE PLAN

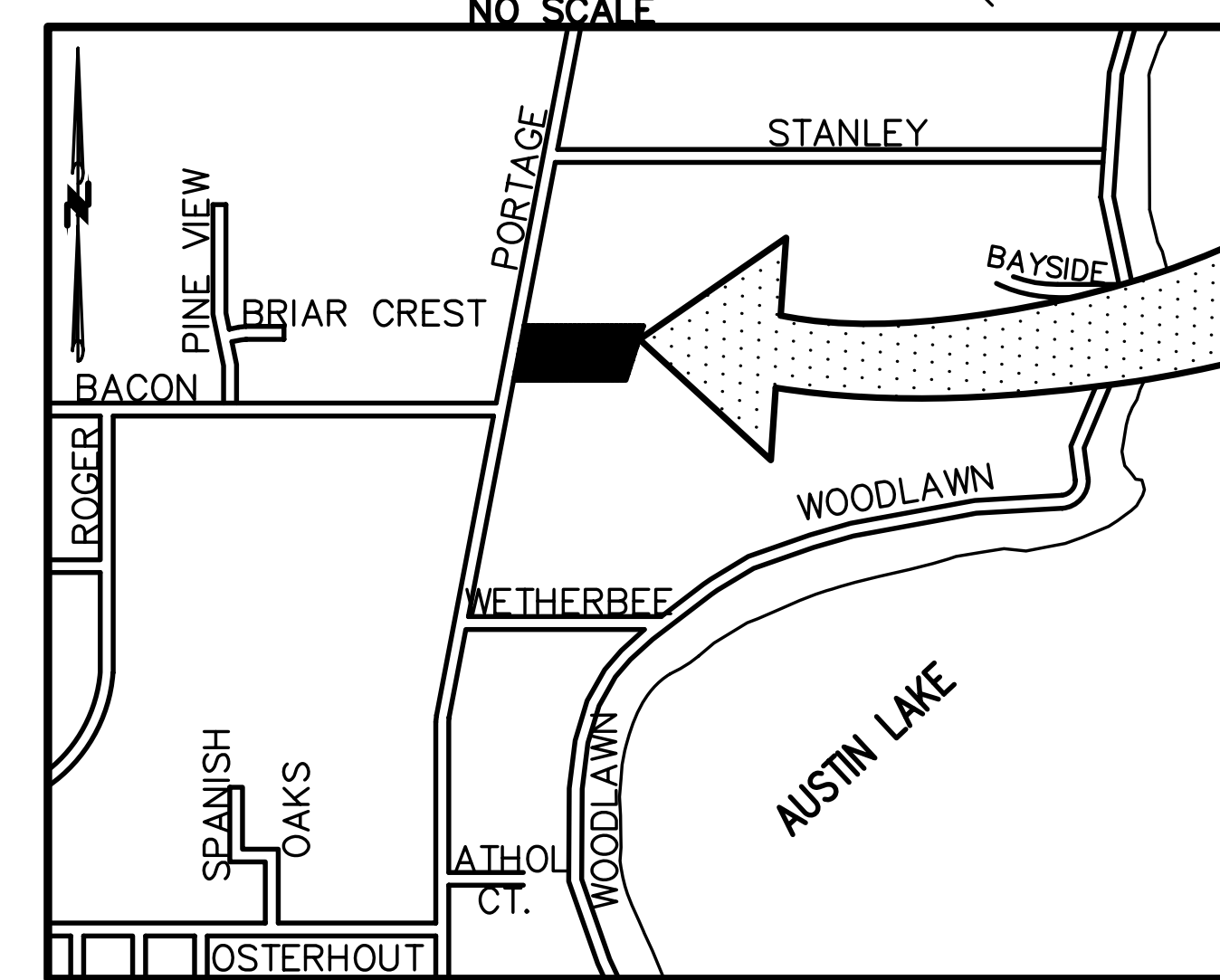
WIGHTMAN WARD, INC.  
 9835 PORTAGE RD.  
 PORTAGE, MI 49002

BY GARY D. HAHN  
 PROFESSIONAL SURVEYOR NO. 38116

DATE: 8/04/08  
 SHEET NO.: 3  
 DWG. NO.: D-2708



VICINITY MAP  
 NO SCALE



PROJECT SITE